

Expanding Access to Great Schools

INVESTMENTS IN SCHOOLS, LEADERSHIP AND INFORMATION RESOURCES
CREATE NEW OPPORTUNITIES FOR STUDENTS AND FAMILIES



**Philadelphia
School Partnership**

ANNUAL REPORT • 2019

Spreading Educational Opportunity Neighborhood by Neighborhood

In 2019, Philadelphia continued its steady climb to move more students into high-achieving schools (7% increase from 2018) and reduce the number of students in the city's lowest performing schools (14% decrease). Over the last five years, Philadelphia schools as a whole have continued to make modest but steady improvement, as evidenced by state student assessment data. Last year, 42% of city public schools demonstrated above-average growth on the PA Value-Added Assessment System in reading and 45% in math. This trend is evident across schools of all demographics.

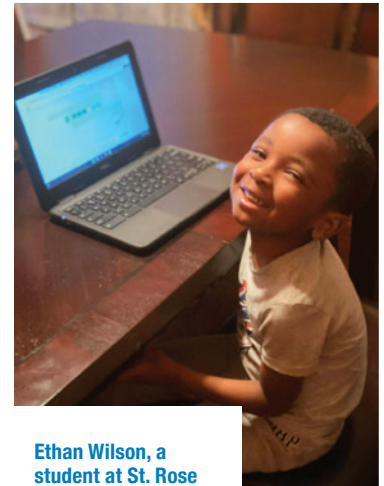
MEETING THE CHALLENGE OF COVID

- ▶ **When Philadelphia schools closed in March 2020** as a result of the COVID-19 pandemic and shifted to online learning, an immediate obstacle was the tremendous gap in families' access to technology. PSP moved quickly to engage with donors and launch the Jump-Start Philly Schools Fund, raising more than \$4 million to address needs created by the school closures. Right away, Jump-Start acquired 15,000 Chromebook computers for more than 100 schools across the city that were scrambling to ensure their low-income students could participate in school from home.

The unprecedented disruption of the Philadelphia educational system will have long-lasting impact on students and schools. The Jump-Start Fund is poised to make additional investments to help schools ready themselves for the challenges they will face in the fall.



PSP staff distribute some of the 15,000 Chromebooks to school representatives



Ethan Wilson, a student at St. Rose of Lima School in West Philadelphia, is excited to use a Chromebook to attend school virtually

2013–2019

The number of Philadelphia students enrolled in public schools that are in the state's top quartile has increased by 8,400*

PSP has contributed to this ascent by investing philanthropic growth capital to expand and multiply schools that work, and by supporting families, regardless of their zip code or circumstance, in discovering and applying to those schools.

Our investments help new schools to form and high-achieving schools to replicate in order to enroll more students. These investments target students in the city's most disadvantaged neighborhoods. PSP also invests to develop the managerial skills and mindset of aspiring principals, which has translated into accelerating academic growth in dozens of schools across the city. Finally, PSP's investments in information resources for families—chiefly GreatPhillySchools and Apply Philly Charter—have helped tens of thousands of students make more intentional and informed school choices.

CARVING A WIDER PATH INTO ENGINEERING AND SCIENCE

- ▶ **Beginning in 2015**, PSP granted nearly \$350,000 to the special-admission George Washington Carver High School of Engineering and Science to extend its awarding-winning educational program to middle school students. Carver's middle school has fewer admission requirements than the high school and specifically enrolls students from low-income areas of the city—overall, 68 percent of Carver students are Black and 44 percent are economically disadvantaged—providing them an opportunity to improve their academic resumes so they can meet the 9th grade entrance requirements and stay enrolled in the upper grades.

Average percent of Carver middle school students achieving proficient or advanced on state assessments:

	2016	2019
Math	35%	68%
Reading	86%	94%

2013–2019

The number of Philadelphia students enrolled in public schools that are in the state's bottom quartile has decreased by 21,614

New Seats Where They Are Needed Most

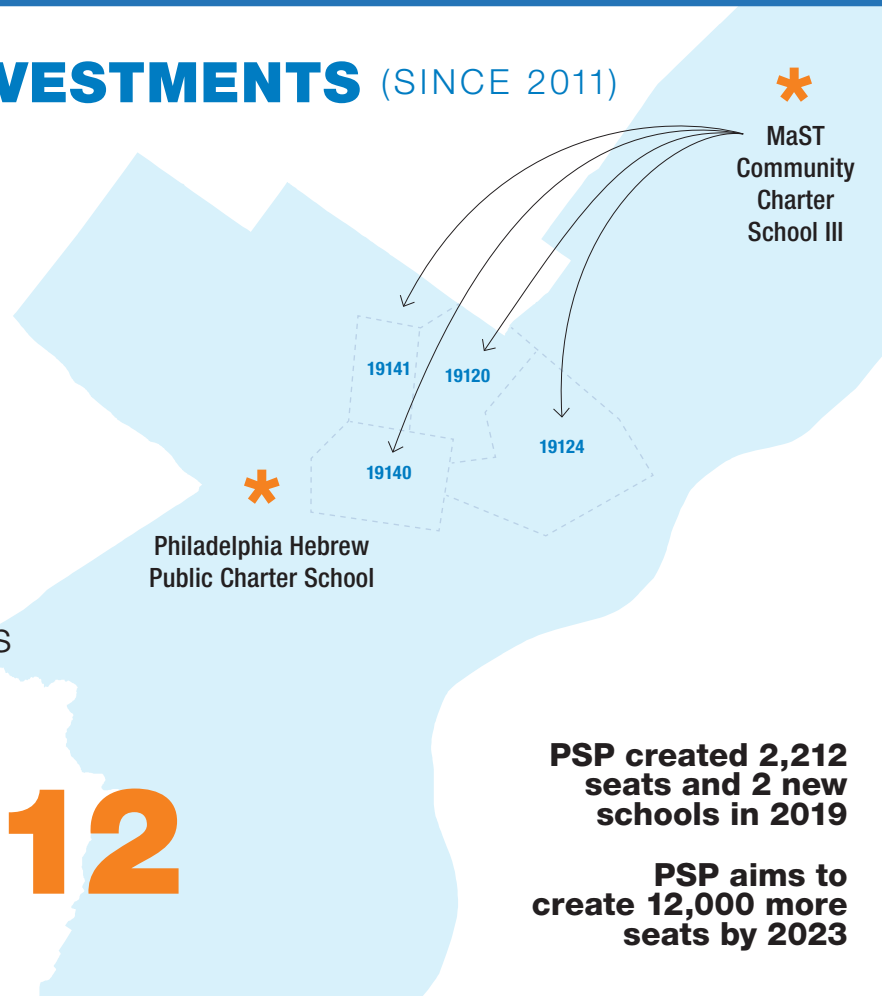
Waiting lists for public charter schools, public magnet schools and private-school scholarships in Philadelphia include the names of more than 30,000 students. Families want more seats. Families need more seats in high-opportunity schools. PSP is the only nonprofit organization in the city funding the creation of new schools and seats regardless of school type: district, charter, or private.

SCHOOL INVESTMENTS (SINCE 2011)

20
new schools

68
school investments

30,412
new seats



2011

PSP invests in
7 schools

2013

PSP school investments
number 25

Two New Schools in 2019

1.

MaST Community Charter School III

Grades K-12 • 1,300 seats • Northeast

MaST's third science and technology-focused school in Philadelphia pulls at least 50 percent of its students via lottery from four high-need zip codes.

2.

Philadelphia Hebrew Public Charter School

Grades K-8 • 702 seats • East Falls

New York-based Hebrew Public's first Philly campus is an innovative diverse-by-design school where students learn core subjects and the Hebrew language, with an emphasis on global citizenship.

A NEW SCHOOL MEANS A LIFE-CHANGING OPPORTUNITY

► Malika Minor lived in North Philadelphia

her entire life. The mother of an incoming kindergartner and first grader for the 2019-20 school year, Malika knew she wanted her children to go to a better school than she attended. That meant they would have to apply to enroll in schools outside her neighborhood. Luckily, Malika's children won two of 900 seats at the new MaST Community Charter School III, which opened in 2019 with a grant from PSP. MaST I and II both rank among the top 8 percent of all public schools in the city for student achievement. Malika chose to move out of her neighborhood in order to be closer to MaST III in Northeast Philadelphia and says enrolling in MaST III was a life-changing experience her children could not pass up.

Malika and her daughter on the first day of kindergarten at MaST III



2017

PSP surpasses 50 school investments

2019

PSP school investments total 68

Two Expansions in 2019

1.

Cristo Rey Philadelphia High School

Grades 9-12 • 110 new seats • Tioga

Cristo Rey's new campus in Tioga expands opportunities for low-income students to enroll in the innovative high school, where every student works in a business internship one day a week.

2.

Mariana Bracetti Academy Charter School

Grades K-12 • 100 new seats • Frankford

The Charter School Office approved 100 additional high-school seats—bringing the total school enrollment to 1,260—after Bracetti was named a Peer Leader by the School District two years in a row.

The new Cristo Rey Campus holds 600 students



2012

Cristo Rey Philadelphia High School opens with help from a PSP startup grant

2016

83% of the first Cristo Rey graduating class matriculates into college

ONE GRADUATION PAVES THE WAY FOR ANOTHER

► As a freshman at Cristo Rey

Philadelphia High School—an independent, Catholic high school for students who could not otherwise afford a private education—Kim Rosario of Hunting Park did not really think about attending college. No one in her family had a college degree. Now that Kim is a senior, attending college is not only a goal, it's her soon-to-be reality. Kim was accepted to multiple colleges and will enroll at Franklin & Marshall this fall to pursue a career in art therapy.

Kim followed her sister Kiara, one year older, to Cristo Rey. Kiara enrolled last fall at Swarthmore College, where she is on a full-tuition scholarship. The sisters' path to college was paved in part by Cristo Rey's work-study program.

All students in the school work one day per week in professional internships at companies in greater Philadelphia, which in turn cover about half of the cost of the interns' tuition. Kim received exposure to the business, arts and education fields by working at FMC, the Kimmel Center, and the Arch Street Preschool. These real-life work experiences motivated her to want to become an art therapist. Although Kim won't get to experience high-school graduation in the same way her sister did, she looks ahead to joining Kiara in a few years as the proud holder of a college diploma.



Kim (left) and Kiara Rosario

2019 Cristo Rey's new campus opens with help from a PSP growth grant



Johnathan Ortiz, a member of the founding class of Cristo Rey Philadelphia, is its first alum to graduate from college, earning a degree in information sciences and technology from Penn State University and landing a job at Comcast

Big Gains at Schools with Strong School Leaders

The more prepared students are for an assignment or test, the more likely they are to achieve a better outcome. This is just as true for school leaders, which is why since 2013 PSP has invested to create and scale programs that prepare principals for the challenges of urban school leadership.

As of fall 2019, 36 alumni of PhillyPLUS (Pathways to Leadership in Urban Schools), a two-year principal preparation program designed and created by PSP in partnership with city schools, were leading Philadelphia schools as principal. Forty-six others were serving as assistant principal and 22 in central-office school administrator roles. Additionally, 31 city principals and 20 assistant principals are alumni of the National Principals Academy Fellowship (NPAF), a similar, one-year leadership experience PSP has funded since 2013. Nearly 50% of the leaders from both programs are people of color.

Collectively, these leaders are helping to propel the city's steady improvement in school quality. A number of their schools are among the city's most improved.

Principal Kimmel regularly takes part in classroom activities at his school



Todd Kimmel and Shakeera Warthen were part of the second PhillyPLUS cohort, starting in 2014. They became principals in 2015. As their schools have steadily improved, both have subsequently been selected to join the prestigious Neubauer Fellowship in Educational Leadership.

Shakeera leads Amadee Bregy School in South Philadelphia, serving grades K-8. Todd leads Horatio Hackett in Fishtown, a K-5 school. Both schools are outpacing city gains in reading and math in the critically important elementary grades.

2013

PhillyPLUS launches its first cohort with eight residents; all eight were still working in city leadership roles in 2019-20

2019

There are 121 PhillyPLUS alumni and participants in leadership roles in Philadelphia schools—including 36 as principals, 46 as assistant principals, and 22 others in key central leadership support roles at school networks



Todd Kimmel

Principal, Horatio B. Hackett School • Fishtown



Shakeera Warthen

Principal, F. Amedee Bregy School • South Philadelphia

Math Proficiency in Grades 3-5		
	2016	2019
Hackett	28%	45%
Bregy	12%	26%
Philadelphia Overall	21%	24%
State of PA	49%	49%

Reading Proficiency in Grades 3-5		
	2016	2019
Hackett	40%	56%
Bregy	23%	32%
Philadelphia Overall	33%	37%
State of PA	61%	62%

2019 There are also 31 principals and 20 assistant principals who are alumni of the PSP-supported NPAF program, a one-year program that prepares current or aspiring principals to become instructional and cultural leaders—not merely building managers

School Choices Abound, but Families Seek More High-Achieving Schools

In Philadelphia, 65% of the city's school-age children exercise choice every day by attending a public district, public charter, or private/Catholic school other than their assigned neighborhood school. At the high school level that number is 88%. Families are making these choices because they want their children to attend the best school possible, and their neighborhood school is not always the right option for them. Data show that low-income students are underrepresented in high-achieving schools. They seek better school options, only to be denied entry to them because there are not enough seats to meet the demand.

Regions of Philadelphia with higher-achieving neighborhood schools, such as in the Northeast, tend to see a high share of students enrolled in their assigned neighborhood (catchment) schools. Conversely, in parts of South and West Philadelphia, the majority of students do not attend their catchment schools.

33,949

students applied for seats at 80 public charter schools on Apply Philly Charter for the 2020-21 school year

7,989 student applicants received one or more seat offers (*based on a number of different factors: including random lottery results and zip code and sibling preferences*)

25,960 student applicants didn't get offered a seat

1689

William Penn Charter School opens

1782

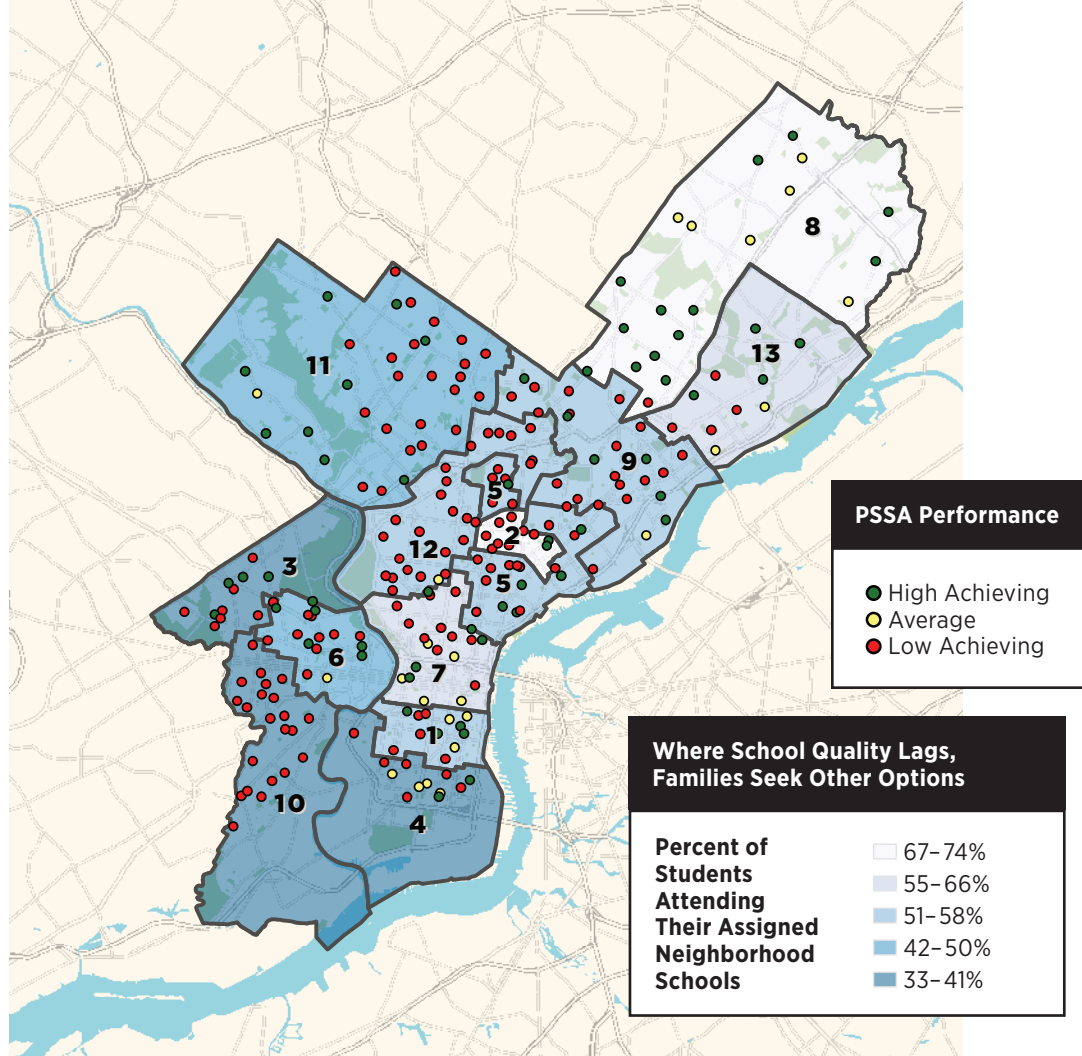
Philadelphia's first Catholic school opens (now St. Mary's Interparochial)

1836

Founding of Central High School, city's first public high school

1852

Formation of city's parochial school system



In Philadelphia, the percentage of students in a school who are not geographically assigned to it rises as the school's achievement level rises. Across the city, the majority of students enrolled in schools that demonstrate overall student achievement above the state average are not enrolled in their assigned catchment school.

PSP created the GreatPhillySchools website and Apply Philly Charter, an online application system used by most charter schools, to ensure families in all regions of the city have the information and tools they need to apply to schools that are a good fit for their children.

Achievement Tier of Attending School	Enrolled Students Living Within Catchment	Enrolled Students Living Outside Catchment
High Achieving	39%	61%
Average	51%	49%
Low Achieving	56%	44%

1997

City's first public charter schools open

2010

School District converts the first group of Renaissance Charter schools

2015

Number of students enrolled in charters reaches one-third of total public school enrollment

2019

City holds more than 450 public and private schools

Board of Directors

Michael G. O'Neill, Chairman
Principal, Prime Rock
Energy Capital

William Marx, Treasurer
Partner, Corporate Tax
Grant Thornton LLP

Evie W. McNiff, Secretary
Education Advocate

Zakiyyah Boone
Interim Chief Executive Officer
Wonderspring

Colin Kelton
Chief Marketing Officer,
The Vanguard Group

F. William McNabb, III
Former Chairman and CEO
The Vanguard Group

Megan Maguire Nicoletti
President and CEO,
Maguire Foundation

Ben Persofsky
Senior Vice President,
Brown Brothers Harriman & Co.

Kevin Shafer
Founding Partner, The City Fund

Sean Vereen
President, Steppingstone Scholars

Janine Yass
Founder, Boys' Latin of
Philadelphia Charter School,
School Reform Advocate

Mark Gleason
Executive Director



“The world is watching us. There is no better way in these tumultuous and chaotic times to make evident the spirit, goodwill, love and compassion of the American people than properly educating our youth – Philadelphia should be the model for the world as it was in 1776. Through its work with public, private, and Catholic schools, PSP is making this happen.”

Edward (Ward) J Fitzgerald III, CEO and Senior Managing Principal of Exeter Property Group

\$1 million



“Philadelphia School Partnership is critical to our community’s future because when we invest in education, we invest in the promise of children.”

F. William McNabb, III, Former Chairman and CEO of The Vanguard Group

\$1 million



“Over the last eight years, PSP has been the catalyst of change in the Philadelphia school system, and the Horner Foundation is excited to support the Partnership’s important work.”

\$750,000

2010 PSP debuts and sets \$100 million fundraising goal

2013 Pledges surpass \$50 million

2017 Cumulative pledges climb above \$80 million

2019 Over 190 donors; cumulative pledges exceed \$120 million

Expanding Educational Opportunities

Thanks to These Investors

\$5,000,000 and above

Anonymous
The Maguire Foundation
 William Penn Foundation
 Walton Family Foundation
Janine and Jeff Yass

\$1,000,000 to \$4,999,999

The J. Mahlon Buck, Jr. Family
**The City Fund (formerly the
 Laura & John Arnold Foundation)**
Hilda & Preston Davis Foundation
 Michael & Susan Dell Foundation
Ward Fitzgerald
 Bill & Melinda Gates Foundation
 Otto Haas Charitable Trust
 Dorrance H. Hamilton (Deceased)

Patricia Kind Family Foundation
The McCausland Foundation
F. William III & Katie McNabb
Mike & Jeannie O'Neill
 Lee Rowan
 Charlie Ryan
Pam & Tony Schneider
Matthew & Julie Tewksbury
Joan M. Wismer Foundation

\$100,000 to \$999,999

50CAN
ACE Chubb
 Hallee & David
 Adelman
 AE Foundation
**Ted & Barbara
 Aronson**
 The Barra Foundation
**Lois G. & Julian
 A. Brodsky**

**Jim & Elinor Buck
 Caroline Alexander
 Buck Foundation**
 Chappell Culpeper
 Foundation
**CHG Charitable
 Trust**
 Comcast/NBCU
**Connelly
 Foundation**

Samuel S. Fels Fund
**Jennifer Rice &
 Michael Forman**
 Mike & Joyce Hagan
 Haldeman Family
 Foundation
**Hamilton Family
 Charitable Trust**
**The Horner
 Foundation**

**The Howley
 Foundation**
Ned & Marcia Kaplin
 The Brook J. Lenfest
 Foundation
**The Lenfest
 Foundation**
Evie & John McNiff
 Estate of Thomas
 A. Mills, Sr.

Peter Morse
 NACSA
Roy S. Neff
Thomas P. Nerney
**Philadelphia
 Trading, Inc.**
 David & Karina
 Reuter
**Spring Point
 Partners**

**Kathleen & Frank
 Seidman**
 Shire PLC
 The Snider
 Foundation
Vanguard
**Connie & Sankey
 Williams**
Morris Williams
 Eustace Wolfington

Up to \$99,999

The 25th Century
 Foundation
Robert Adelson
 Christina Altomare
 Amazon Smile
(various individual donors)
 American Airlines
 Anonymous
 Aqua America
 Athenian Properties
 Jim & Janet Averill
The Bancorp
 Benevity
(various individual donors)
 Peter Benoliel &
 Willo Carey
 Romona Riscoe
 Benson
 Cheryl & Richard
 Binswanger
 Biocoat, Inc.
 Julia Bohren
 Bouncer Foundation
 Chris Bravacos
 Cathy & Jack
 Brennan
**Brown Brothers
 Harriman & Co.**
 Jim & Ali Bruder
**Bryn Mawr
 Trust Co.**

Donald E. & Hana
 Callaghan
 Rev. Bonnie
 Camarda
**Win & Ellen
 Churchill**
 Cigna Foundation
 Robyn Clark
**Cohen Family
 Charitable Trust**
Marty Connor
 Cozen O'Connor
CRW Graphics
 Helen Cunningham
 Sean & Felicia Daly
 Dell, Inc.
**Drinker Biddle
 & Reath**
The Do Gooders
**Dolfinger-McMahon
 Foundation**
 Natalie Dyen
Bonnie Eisenfeld
Exelon/PECO
 eXude, Inc.
 Susan & Robert
 Fahey
 Gloria Feldman
**Marie & Joseph
 Field**
David & Jaimie Field

Emily Foote
 Eric & Margo Fox
 John Fry
 The Goldenberg Group
 Goldman Sachs
 The Good Dog
 John & Gina Griffin
 Ellensue & Michael
 Gross
 Bob & Joanie Hall
 Sarah Hegarty
 The Allen Hillis Fund
 Dee & Roger Hillas
 Deborah & Kurt
 Hilzinger
 IGS Energy
 iHeart Media
Jerry Jacobs
 Janney Montgomery
 Scott
 JPMorgan Chase
 Bank, N.A.
 Just Give
(various individual donors)
 Joseph Kain
 Michael Karp
Colin Kelton
 Sarah & Kevin
 Kleinschmidt
 The Kopelman
 Foundation

Evan Kramer
 Lincoln Financial
 Foundation
**Christian & Mary
 Lindback
 Foundation**
 The Lurie Family
 Foundation
 Charles Manning
 Jason B. Martin
 Stephanie Marudas
Bill Marx
**Brian and Donna
 McNeill**
 Erin Mierzwa
**Michael and
 Jane Miles**
 Milestone Partners
 Stephanie &
 Michael Naidoff
 The Nelson
 Foundation
 Network for Good
(various individual donors)
**Jennifer & Andrew
 Newcomb**
 Tien Nguyen
Leo Niessen, Jr.
Charitable Trust
 Eli Niv
 Natalye Paquin

Nyman Associates
 Patriarch Family
 Foundation
Michael Pearson
 Jane G. Pepper
 Elise Singer &
 Donald Perelman
 Marsha & Jeffrey
 Perelman
 Permit Capital
 Advisors, LLC
 Leo, Eve, Kate, Lexy
 & Julia Pierce
 Matthew Ramer
Robert C. Ray
Gretchen & Jay Riley
 Nicole Pullen-Ross
**George & Karen
 Rosskam**
 Rubenstein
 Foundation
**Sanghrajka
 Foundation**
 Linda & Charles
 Schelke
 SEOM Interactive
**Jesse & Lauren
 Serventi**
**The Sidewater
 Family
 Foundation**

William E. Simon
 Foundation
 Bonnie & Harris Sklar
 Dana Spain
 John B. Stine, II
 Stradley Ronon
 Stevens &
 Young, LLP
 Subaru of America
 Foundation
 TD Charitable
 Foundation
 Wendy Thomas
TouchPoint
 United Way
(various individual donors)
 Univest
 Corporation
 van Beuren
 Charitable
 Foundation
 Callie Walsh
 Elizabeth & Sam
 Warshawer
 Waste Management
Penny Weiner
**Wells Fargo
 Regional
 Foundation**
 Your Part-Time
 Controller, LLC

2019 Financials

SUPPORT AND REVENUE	2019	2018
Contributions	\$8,634,265	\$7,812,716
Donated services	44,743	50,571
Other income	9,039	5,621
Loss on uncollectible pledge		(565,000)
Total support and revenue	\$8,688,047	\$7,303,907
FUNCTIONAL EXPENDITURES	2019	2018
School investments (disbursed)	\$3,670,549	\$3,895,817
Talent investments (disbursed)	1,043,934	2,393,175
Special purpose investments (disbursed)	130,000	310,000
Investment management (evaluation, technical assistance)	1,359,345	1,071,280
Subtotal – investments	\$6,203,828	\$7,670,272
Access to quality schools: GreatPhillySchools, Apply Philly Charter	1,372,530	1,572,766
TeachPHL	11,771	21,100
Policy and research		5,037
General and administrative	1,156,635	1,195,492
Total operating expenses	\$8,744,764	\$10,464,667
Change in net assets	(56,717)	(3,160,760)
Net assets	\$2,901,484 (at Dec. 31, 2019)	\$2,958,201 (at Dec. 31, 2018)



GreatPhillySchools provides free, convenient and unbiased resources to help parents, guardians, and students find, compare and choose great schools in Philadelphia



PSP manages **Apply Philly Charter**—an easy-to-use online system enabling families to apply to any of 80 public charter schools with one standard application



TeachPHL is a collaborative effort of Philadelphia schools and PSP that aims to attract great teachers to city schools of all types and support educators in their career development

Our School Investments

PSP supports schools that have high expectations for all their students

SCHOOL TYPE: ● CHARTER ● DISTRICT ● PRIVATE/PAROCIAL/TRADE

1. Alexander Adaire School *Growth*
2. Alliance For Progress Charter School *Growth*
3. ASPIRA Olney Charter High School *Turnaround*
4. Big Picture Vaux High School *Startup*
5. Boys Latin of Philadelphia Charter Middle School *Startup*
6. Building 21 High School *Startup*
7. Cristo Rey Philadelphia High School *Startup, Growth*
8. Deep Roots Charter School *Startup*
9. DePaul Catholic School *Growth*
10. Esperanza Academy Charter Middle School *Startup*
11. Finishing Trades Institute *Growth*
12. First Philadelphia Preparatory Charter School *Growth*
13. Folk Arts Cultural Treasures Charter School (FACTS) *Growth*
14. Freire Charter Middle School *Startup*
15. George W. Nebinger School *Growth*
16. George Washington Carver High School of Engineering and Science *Growth*
17. Global Leadership Academy Charter School *Incubation*
18. Global Leadership Academy Charter School — Southwest *Turnaround*
19. Hill-Freedman World Academy *Growth*
20. Imhotep Institute Charter High School *Turnaround*
21. Independence Charter School *Incubation*
22. Independence Charter School West *Startup*
23. Independence Mission Schools— St. Helena *Incubation*
24. Independence Mission Schools— St. Malachy *Turnaround*
25. Independence Mission Schools— St. Thomas Aquinas *Turnaround*
26. James G. Blaine Academics Plus School *Turnaround*
27. Kenderton Elementary (formerly a Young Scholars Charter School) *Turnaround*
28. KIPP DuBois Collegiate Academy Charter School *Growth*
29. KIPP North Philadelphia Academy *Startup*
30. KIPP Philadelphia Elementary Academy Charter School *Startup*
31. KIPP West Philadelphia Elementary Charter School *Startup*
32. Mariana Bracetti Academy Charter School *Growth*
33. MaST II Community Charter School *Startup*
34. MaST III Community Charter School *Startup*
35. Mastery Charter School — Grover Cleveland Elementary *Turnaround*
36. Mastery Charter School — Clymer Elementary *Turnaround*
37. Mastery Charter School — Frederick Douglass *Turnaround*
38. Mastery Charter School — Simon Gratz High School *Turnaround*
39. Mastery Charter School — Simon Gratz Prep Middle *Growth*
40. Mastery Charter School — Lenfest *Growth*
41. Mastery Charter School — Francis D. Pastorius Elementary *Turnaround*
42. Mastery Charter School — Pickett Campus *Growth*
43. Mastery Charter School — Prep Elementary *Startup*
44. Mastery Charter School — Thomas Elementary *Growth*
45. Mastery Charter School — Hardy Williams *Turnaround*
46. Mastery Charter School — John Wister Elementary *Turnaround*
47. Our Lady of Port Richmond Regional Catholic School *Growth*
48. Pan American Academy Charter School *Incubation*
49. Philadelphia Charter School for Arts and Sciences *Turnaround*
50. Philadelphia Hebrew Public Charter School *Startup*
51. Philadelphia Performing Arts: A String Theory Charter School — East and West *Growth*
52. Philadelphia Performing Arts: A String Theory Charter School — Vine *Growth*
53. Roxborough High School *Turnaround*
54. Russell Byers Charter School *Growth*
55. Samuel Powel Elementary School *Growth*
56. Science Leadership Academy at Beeber *Startup, Growth*
57. Science Leadership Academy Middle School *Startup*
58. SS. John Neumann and Maria Goretti High School *Turnaround*
59. St. Mary Interparochial School *Incubation*
60. TECH Freire High School *Startup*
61. The City School at Fairmount *Growth*
62. The City School at Poplar *Growth*
63. The Workshop School *Startup*
64. Universal Audenried Charter High School *Turnaround*
65. Universal Vare Charter School *Turnaround*
66. West Catholic High School *Turnaround*
67. William D. Kelley Elementary School *Turnaround*
68. Wissahickon Charter School — Awbury *Startup*



WHO WE ARE

Philadelphia School Partnership (PSP), Philadelphia's largest public charity supporting K-12 education, invests to expand access to great schools across the city. We do this by investing philanthropic resources to create, expand and transform schools that are in high demand, and by providing information, tools and other supports to families to ensure great schools are accessible to all.

JOIN US

► invest@philaschool.org

philadelphia
school partnership

150 S. Independence Mall West, Suite 1200
Philadelphia, PA 19106
philaschoolpartnership.org

